

abat

consult

Space for the business of tomorrow.

OVERview

An aerial photograph of a car driving on a bridge over a large body of water. The car is positioned in the center of the bridge, moving towards the right. The water is a deep teal color, and the surrounding landscape is rocky and sparsely vegetated. The bridge has a concrete railing and lane markings.

360° Automotive Expertise
End-to-End Solutions for the Industry





abat: Your SAP Partner for the Automotive Industry

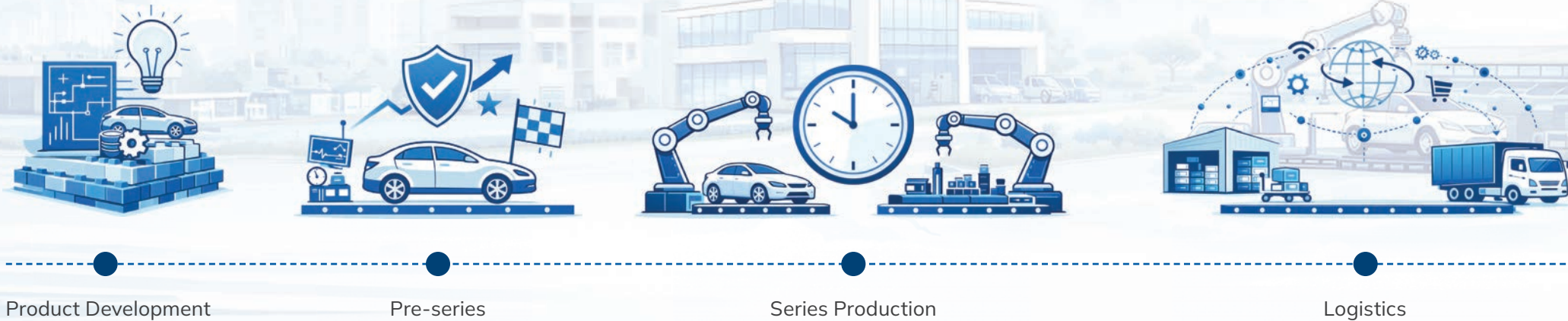
The automotive industry is a driving force of progress, and its complexity is growing exponentially. Global supply chains, dynamic markets, and the constant pressure to innovate challenge companies to be more agile and efficient than ever before. This is where abat comes in: We are your strategic partner who speaks the language of the automotive industry and addresses tomorrow's challenges today.

With **years of expertise** built **since 1998**, we guide you safely through digital transformation. Our goal is not only to deliver customized SAP solutions but to create real competitive advantages. We understand that in your industry, every detail counts and every decision has far-reaching consequences. That's why we create the space for you to focus on what matters most: innovation, growth, and securing your market position.

The end-to-end process chain: From the initial idea to the production line and beyond – focusing on your value creation

Automotive manufacturing is a masterpiece of coordination. Every phase, from the initial idea to the finished vehicle and beyond, must mesh perfectly. abat offers you comprehensive support that masters this complexity and optimizes your entire value chain – from development to series production, from suppliers to assembly, and beyond to spare parts supply.

We dive deep into your processes and optimize every critical phase with customized SAP solutions. In doing so, we view your production not as an isolated island, but as a dynamic ecosystem. Our consultants analyze the specific requirements of your production lines and translate them into precisely tailored digital workflows. Through the intelligent integration of machine data, material flows, and human resources, we create end-to-end transparency. This allows you to identify bottlenecks early on, reduce downtime to a minimum, and sustainably increase overall equipment effectiveness.



From concept to production line

1. Product Development and Master Data Management: The Foundation for Innovation

The basis for any successful manufacturing operation lies in precise master data and intelligent product lifecycle management (PLM). We help you master the complexity of your products, from managing complex bills of materials to applying **IPPE (Integrated Product and Process Engineering)** and variant bills of materials (**VariantenSTL**), all the way to precise **variant configuration**. This ensures that your product development proceeds transparently, efficiently, and error-free, from the first sketch to production readiness.

2. Pre-series and Testing: Ensuring Quality, Increasing Efficiency

The pre-series and testing phase is crucial for the quality and market readiness of your products. We support you from the configuration and planning of **test rigs** and tests through to the

small-batch manufacturing process for the construction of individual test rigs (e.g., electric drives, sub-assemblies). Our solutions ensure not only quality but also efficiency in this critical phase by enabling the rapid and reliable transition of new products to series production..

3. Series Production and In-House Component Manufacturing: Perfection in time

In series production, every second counts. We optimize your **order, capacity, and demand planning**, as well as **BOM explosion** and **demand generation**. Through precise **call-off control**, taking into account **JiT (Just-in-Time) / JIS (Just-in-Sequence)** processes, we ensure smooth and highly flexible series production. Furthermore, we manage and map internal and cross-plant logistics processes and ensure maximum efficiency in **in-house component production**, such as in the **press shop** and **body-in-white operations**.

4. Intralogistics and Interlogistics: Connected supply chains that drive progress

Integrated and intelligent logistics form the backbone of your production. We offer a comprehensive solution for **material flow**, including **conveyor belt supply** and **warehouse management**. We manage **multi-stage goods receipts** and optimize **in-plant supply processes** and **route planning**. In the area of interlogistics, we support you with **part-by-part / CKD supply** for global assembly networks, the **procurement of packaging materials**, the mapping and monitoring of complex global logistics chains, the **tracking of batches** and **serial numbers**, and **customs clearance**. This ensures that your products reach their destination on time and efficiently.



Load Carrier



MES



Spare Parts Business



Supplier Business

5. Load Carrier Management: Efficiency in the Cycle

Load carrier management is an often underestimated but crucial factor for the overall efficiency of your supply chain. We offer solutions for the **international management** and storage of **load carriers/containers (returnable containers)**, including support for **special processes such as maintenance and scrapping**. We also optimize **transport planning and execution** (including goods receipt and goods issue processes) for the distribution of load carriers to assembly plants and suppliers to minimize empty runs and **reduce costs**.

6. Manufacturing – MES (Manufacturing Execution System): Real-Time Transparency

The integration of MES systems is the key to transparent and controllable production. We seamlessly integrate **abat+ PLUS** and other MES systems into your complex manufacturing processes. With our **proprietary MES system**,

we enable you to precisely control and monitor your production in real time, optimize production processes, and respond quickly to disruptions. This allows you to sustainably increase the **efficiency and quality** of your manufacturing.

7. Spare Parts Business: Service That Connects

We remain your partner even beyond the development and manufacturing process. We optimize your **global spare parts business**, from efficient **order processing** and precise **planning and procurement** to centralized and decentralized **warehouse management**, as well as seamless **complaint and returns handling**. This ensures the availability of spare parts and first-class service for your customers worldwide.

8. Supplier Business: Stable Supply as a Competitive Advantage

However, high-performance automotive production does not stand or fall solely on its

own processes. Equally crucial is the **stability** of the upstream **supply chain** – and thus the suppliers' **performance**. A key focus here is the proactive identification and prevention of supply disruptions. In a pilot project in Mexico, abat collaborated with an automotive supplier to develop an **AI-powered solution** that **predicts** potential **disruptions** at suppliers at an early stage. Based on SAP data and external factors, the system continuously **analyzes risk signals** along the supply chain, enabling proactive intervention before bottlenecks impact production. This project exemplifies how **artificial intelligence** can be used in the supplier environment to **ensure** long-term **supply security**. The technological foundation for such solutions – ranging from AI-powered **early risk detection** to full SAP integration – is provided by the broad service portfolio that abat offers for all facets of the automotive industry.



Technology and Service: Your Competitive Edge Through Innovation and Global Presence

Our solutions are based on the latest SAP technologies – utilized to their full potential to optimize your processes and strengthen your competitive edge:

SAP S/4HANA:

The digital core of your business processes, providing real-time insights and maximum agility. We support you through complex transformations, from greenfield implementations and brownfield migrations to hybrid scenarios.

SAP Transportation Management (TM) & Extended Warehouse Management (EWM) incl. MFS:

For optimized and resilient logistics and warehouse management. We integrate material flow systems (MFS) and ensure seamless control of your goods movements.

abat+ PLUS (MES):

Our proven Manufacturing Execution System for precise real-time control and monitoring of your manufacturing processes.

SAP Business Technology Platform (BTP) & Cloud Integration:

For innovative extensions, seamless integration of your systems (e.g., via SAP PI/PO, Cloud Integration, Integration Suite), and the development of forward-looking mobile computing solutions.

SAP Analytics Cloud (SAC):

For comprehensive analytics, predictive models, and informed decisions that give you a clear competitive advantage.

SAP Central Finance (CFin) and SAP Application Interface Framework (AIF):

For the efficient integration and monitoring of your interfaces to ensure data consistency and process reliability.

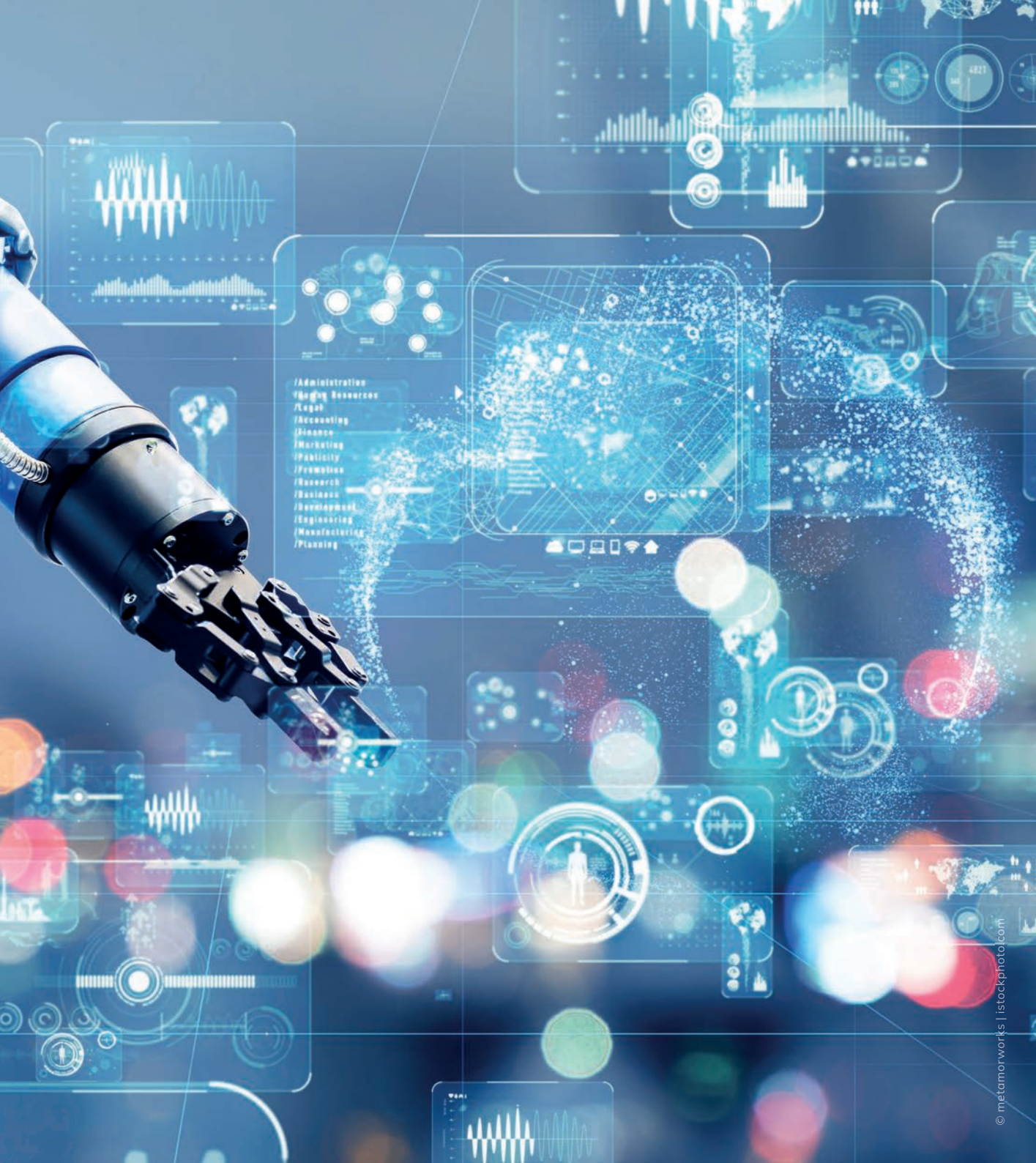
Digitalization and AI:

Artificial intelligence is no longer a topic for the future – it is crucial today. We develop customized AI solutions that integrate seamlessly into your SAP processes and can be operated entirely on-premises upon request. This allows you to benefit from true artificial intelligence without compromising your data sovereignty.

Our range of services goes far beyond pure technology

It includes comprehensive process and technology consulting, the implementation, testing, and rollout of your SAP solutions, as well as reliable 24/7 AMS (Application Management Services) support. In addition, we offer a proven concept for go-live support to ensure a smooth and successful go-live – so that your system launch goes smoothly and critical production processes run smoothly and reliably from the very start.

With our globally active teams and time-tested shoring models, we ensure that you receive optimal support at all times and that your systems run stably and efficiently. We are there where you need us, globally and around the clock. We offer you not only software, but also comprehensive expertise that is crucial for optimizing your supply chain, managing bottlenecks, and keeping supply chains stable – even in unpredictable times.



Beyond the production line: With abat, your vision goes into production

For us, excellence doesn't end at the factory gate or with the finished vehicle on the assembly line. Our promise, "From the idea to the production line and beyond," is the foundation for a partnership that reflects the full scope of your business dynamics. We view digital transformation not as an end goal, but as a continuous driving force to make your processes more resilient, your logistics smarter, and your production more visionary.

With abat by your side, you gain a partner that speaks your language, understands your industry, and shares your vision. We lay the groundwork for future-proof and efficient automotive production that delivers peak performance even under extreme conditions, giving you a decisive edge.

Expertise that bridges industries

The challenges facing modern industries are similar: increasing complexity, interconnected supply chains, and the need for end-to-end digitalization. abat's many years of automotive experience therefore provide a strong foundation for supporting companies in **defence, aerospace, and life sciences** in transforming their value chains – with integrated solutions across the entire end-to-end process.

Visit our website www.abat.de for high-quality success stories and detailed white papers, or feel free to contact us directly: automotive@abat.de

ABOUT US

abat

Founded in 1998, the abat Group is an SAP service provider and innovative software developer. We provide solutions for software-supported business processes, primarily for

companies in the automotive, discrete manufacturing, life sciences, aerospace, defence, and security industries, as well as for companies with logistics processes or production control. Our six service areas give companies the freedom they need for new ideas, efficient processes, and forward-looking solutions.

In our division **consult**, we advise and support you throughout all phases of an SAP project, from conception and implementation to operating your SAP system. abat **manufacture** provides high-availability digital solutions for production control in the complex manufacturing industry. abat **transform** offers innovative and unique solutions that set you apart, including AI, cloud services, and RPA. The division **plm** provides comprehensive process consulting to achieve consistent data flow across PLM, ERP, and MES. The **protect** division offers solutions to help customers protect information and maintain confidentiality, availability, and integrity in business relationships. Finally, our experts in the division **sustain** advise on how to strategically and structurally anchor sustainability and sustainability reporting in a company.



CONTACT

Adrian Stucke
Senior Consultant
automotive@abat.de